



en Hance Park

NEW MODERN CONDOMINIUMS

**MOVE-
IN-
READY**





YOUR NEW ADDRESS

Find Your Place Downtown

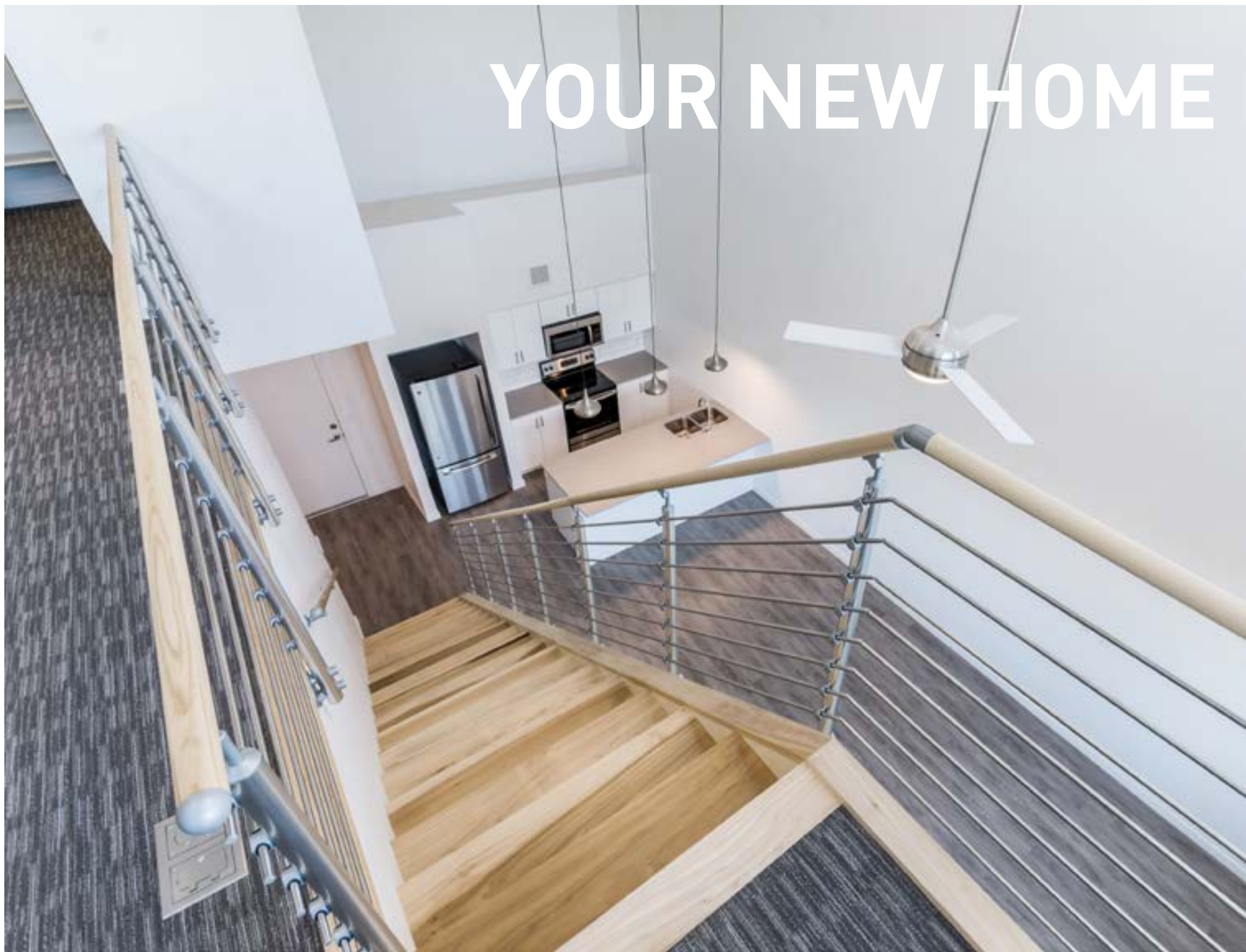
en Hance Park is a new, move-in-ready 49-unit condominium residence located directly across the street from Margaret T. Hance Park and adjacent to Roosevelt Row in the heart of downtown Phoenix.

Just outside your front door you'll find art galleries, festivals, concerts, local eateries, sporting events, and much more. Plus, the Light Rail, freeway and Phoenix Sky Harbor airport are right around corner.

It's time to make the move to downtown Phoenix.

- Community Highlights
- QUARTZ COUNTERTOPS
 - WALK-IN CLOSETS
 - PENDANT LIGHTING
 - CEILING FANS
 - ROLLER SHADES
 - SPACIOUS BALCONIES
 - GENEROUS CEILING HEIGHTS
 - COMMUNITY HEATED POOL
 - BARBECUE & FIRE PIT
 - GATED, COVERED PARKING
 - ALL KITCHEN APPLIANCES INCLUDED

YOUR NEW HOME





UNIT TYPE

1 Bedroom, Single Level

FROM

\$235,000

2 Bedroom, Single Level

\$318,000

2 Bedroom Loft

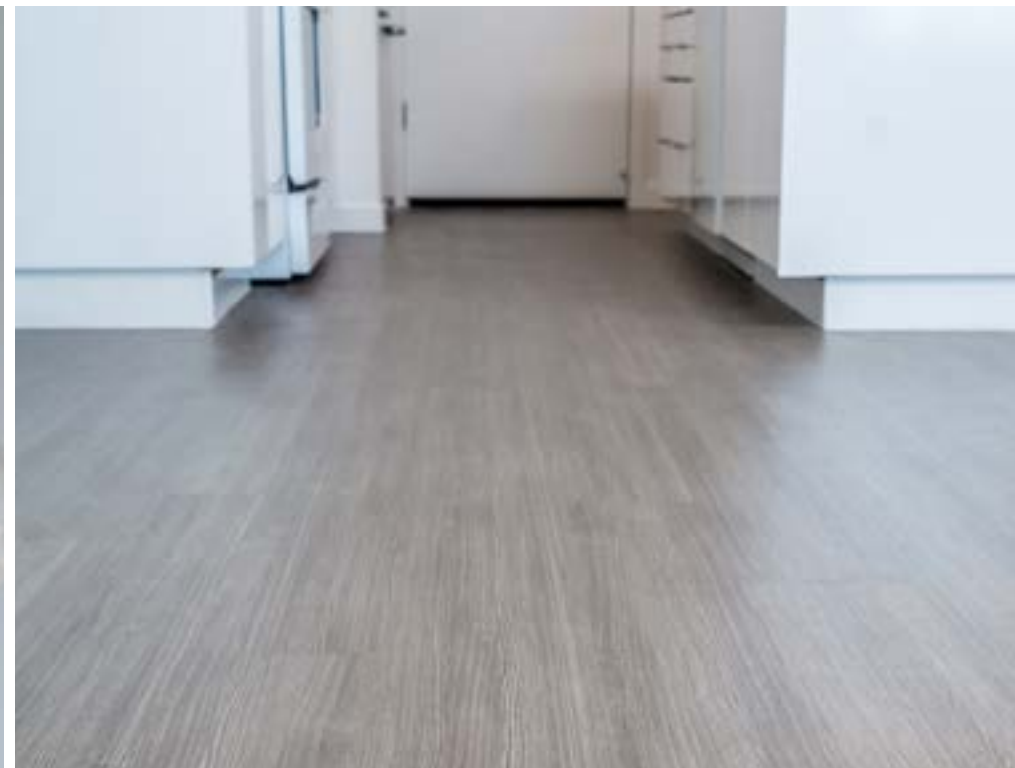
\$400,000

2 Bedroom Corner, Single Level

\$425,000

2 Bedroom Live/Work

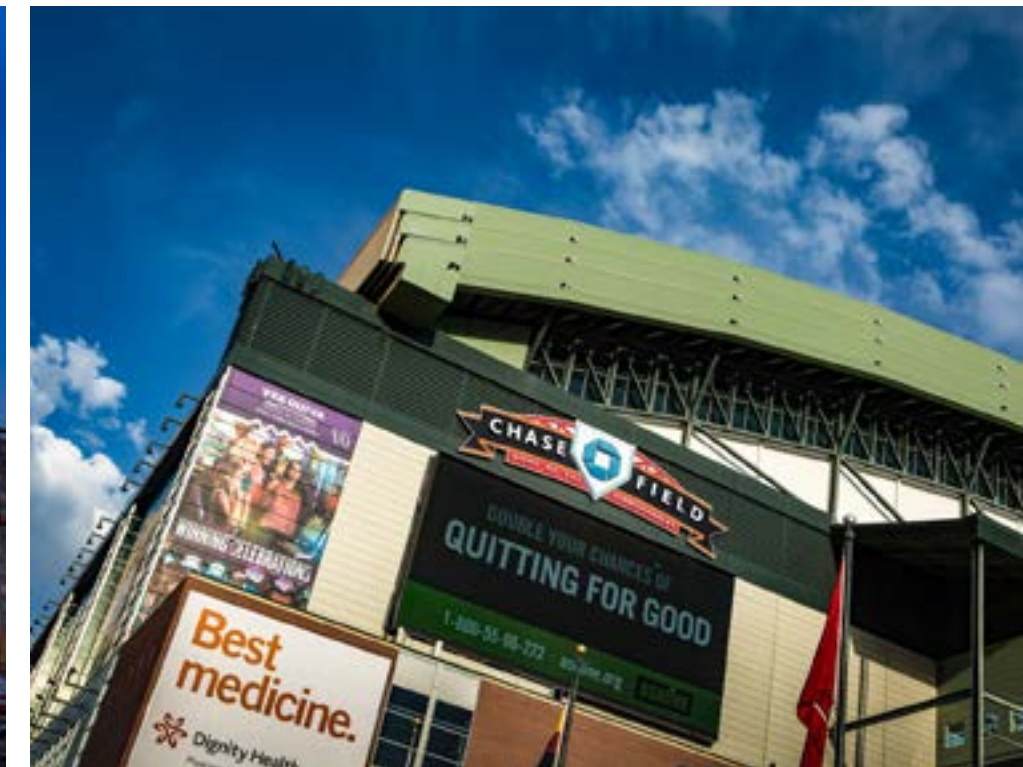
\$455,000





YOUR NEW BACKYARD

YOUR NEW PLAYGROUND



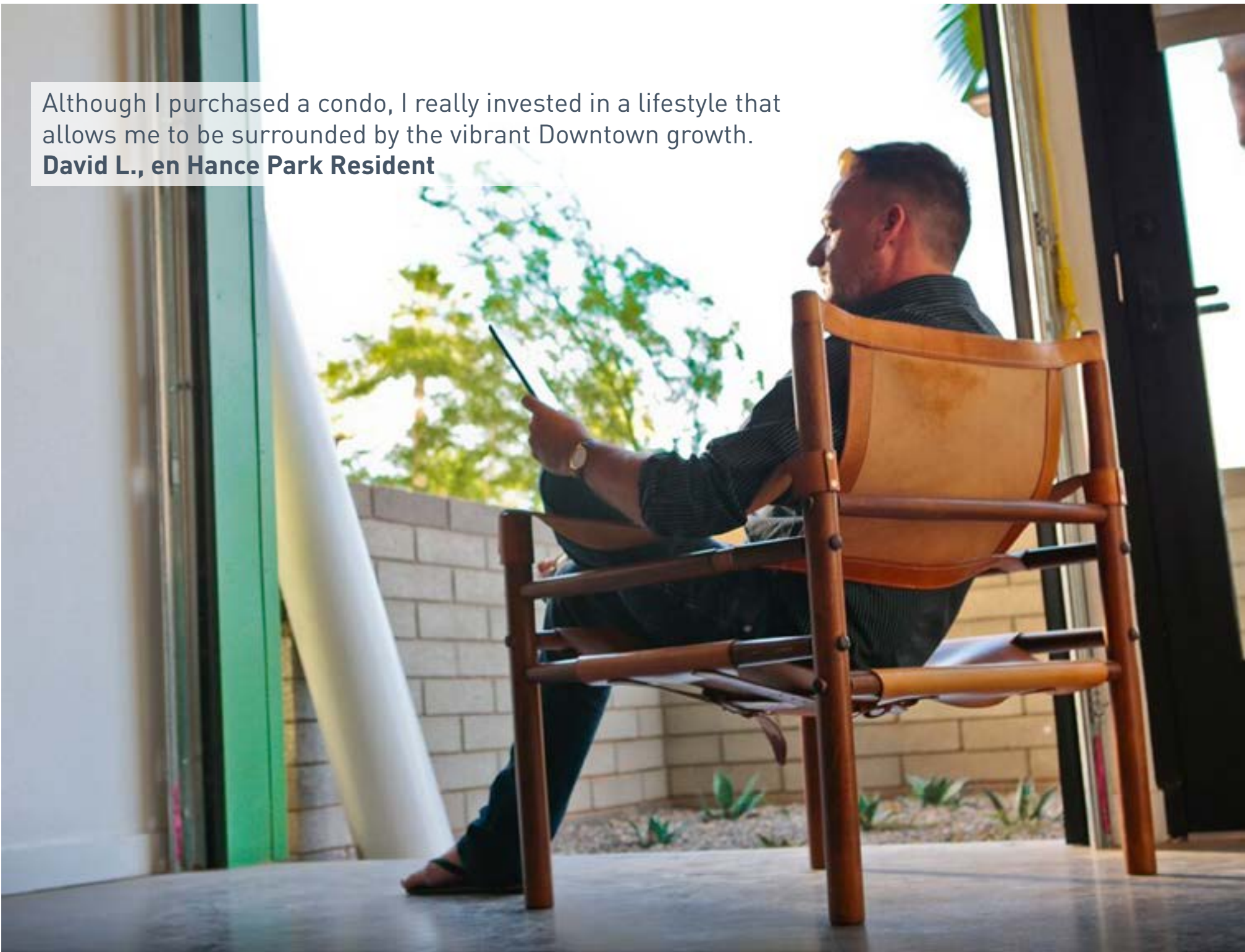
YOUR NEW RIDES





It's a safe, friendly community, and just a short walk from everything that's happening downtown.
Kayla K., en Hance Park Resident

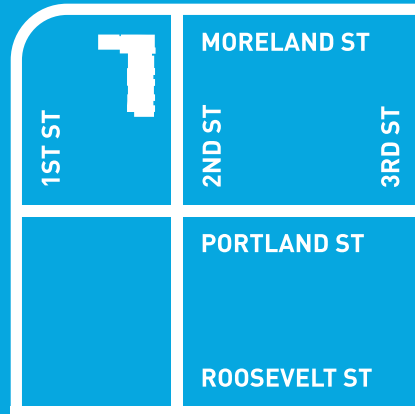
YOUR NEW NEIGHBORS



Although I purchased a condo, I really invested in a lifestyle that allows me to be surrounded by the vibrant Downtown growth.
David L., en Hance Park Resident

YOUR NEXT STEP

Contact us at 602.791.3292 or roberta@enhancepark.com to schedule a showing, or visit our showroom at 1130 N. 2nd Street, Unit 104. We're there everyday. Just give us a call to let us know you're coming.



1130 N 2nd St, Phoenix | enhancepark.com | facebook.com/enhancepark

